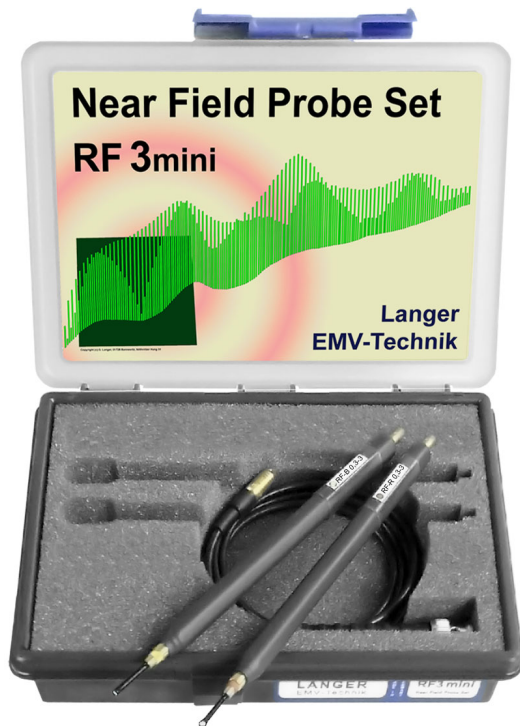


# RF3 mini set

Near-Field Probes 30 MHz up to 3 GHz



## Short description

The RF3 mini set consists of two passive near-field probes with a resolution under 1 millimeter for measuring magnetic fields between 30 MHz and 3 GHz on electronic assemblies during the development stage.

The probes have special miniature heads which are designed for detailed measurements of magnetic field and disturbance currents in the layout and component range. Field orientation and field distribution on an electronic assembly can be detected by special guidance of the near field probe.

The near-field probes are small and handy. They have a current attenuating sheath and, therefore, are electrically shielded. The near-field probes can be connected to a spectrum analyzer or an oscilloscope with a 50  $\Omega$  input. They do not have an internal terminating resistance.

We recommend using the passive probes with a 20 dB or 30 dB pre-amplifier.

## Scope of delivery

- 1x RF-B 0.3-3, H-Field Probe mini 30 MHz up to 3 GHz
- 1x RF-R 0.3-3, H-Field Probe mini 30 MHz up to 3 GHz
- 1x SMB-BNC 1 m, SMB-BNC Measurement Cable
- 1x Case 4, System Case Near-Field Probes

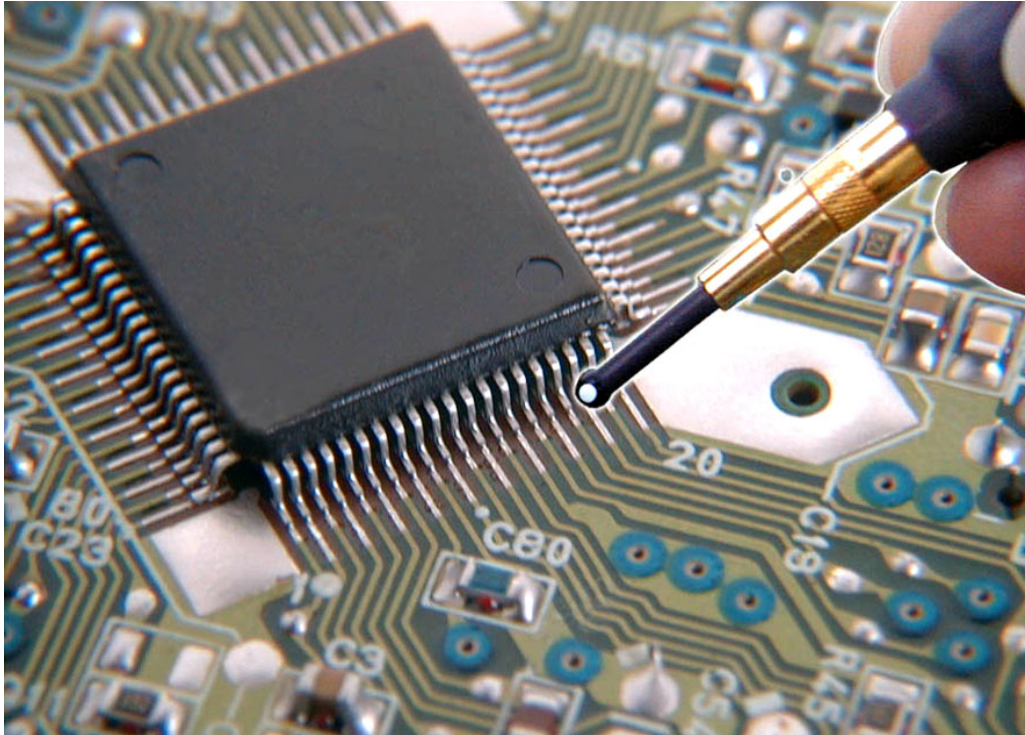
## Technical parameters

Frequency range	30 MHz ... 3 GHz
Connector	SMB, male, jack

# RF3 mini set

Near-Field Probes 30 MHz up to 3 GHz

## Application RF-R0.3-3



## Measurement set-up near-field probes

