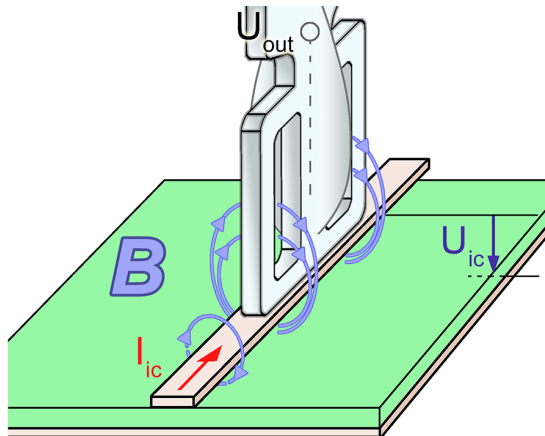


HR-R 8-1

Near-field probe up to 40 GHz B-field



Short description

The HR-R 8-1 is a passive near-field probe for measuring magnetic fields up to 40 GHz. The measuring tip is decoupled from the cable shield by special damping systems. In addition, the probe contains a current attenuator. The probe has an internal matching network to 50 ohm.

The special probe head of the HR near-field probe enables magnetic field measurements to be taken directly on IC pins or individual conductor tracks to localize B-field sources.

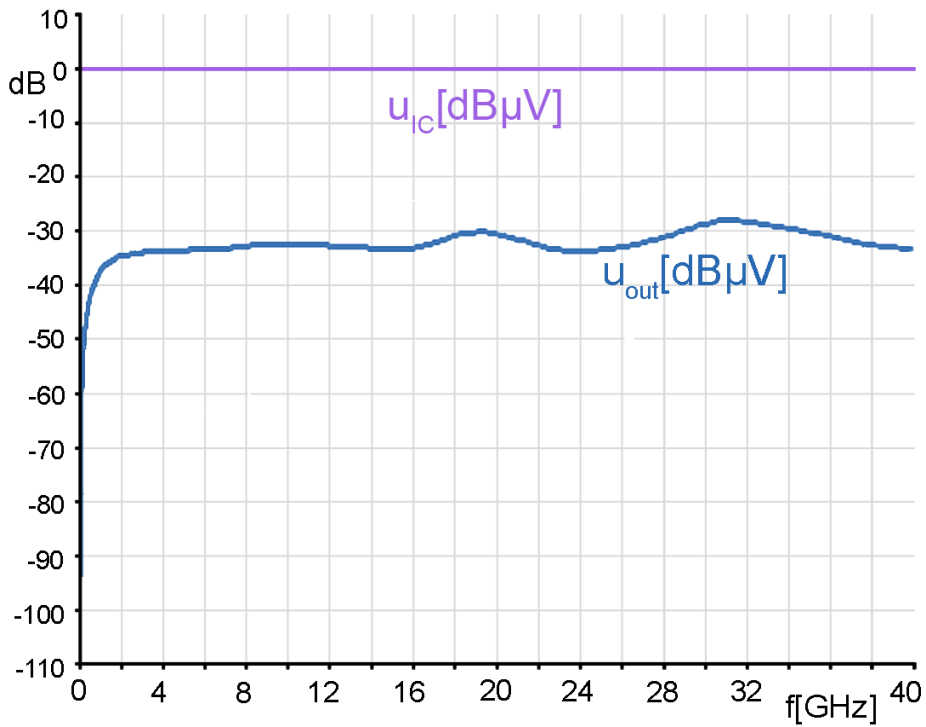
Technical parameters

| | |
|-------------------------|---------------------------|
| upper cut-off frequency | 40 GHz |
| Output resistance | 50 Ω |
| Connector - output | 2.92 mm (K), female, jack |
| Weight | 19 g |
| Sizes (L x W x H) | (147 x 9 x 9) mm |

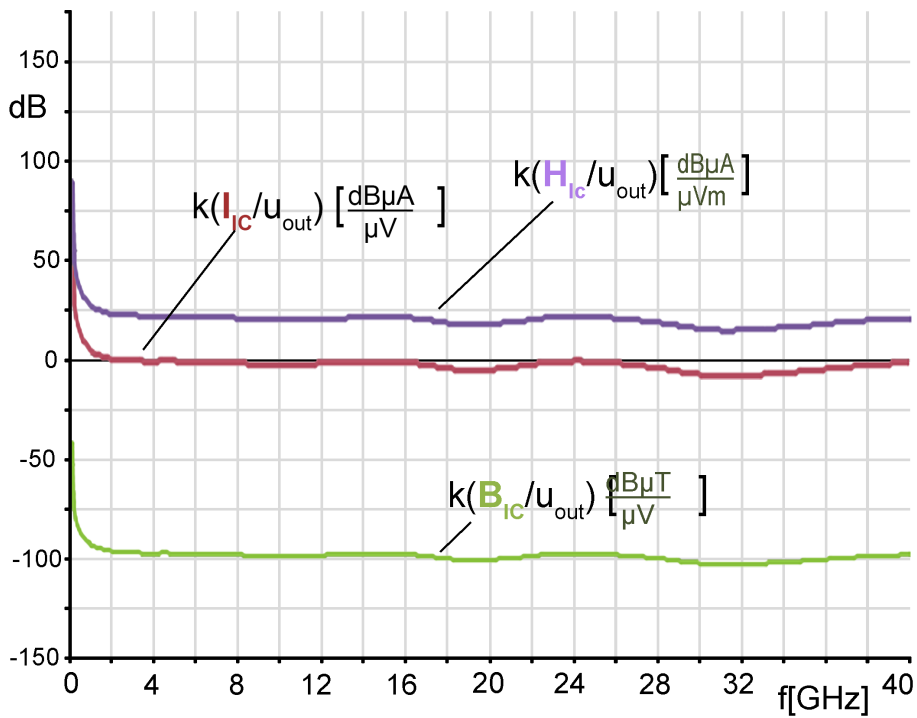
HR-R 8-1

Near-field probe up to 40 GHz B-field

Frequency response



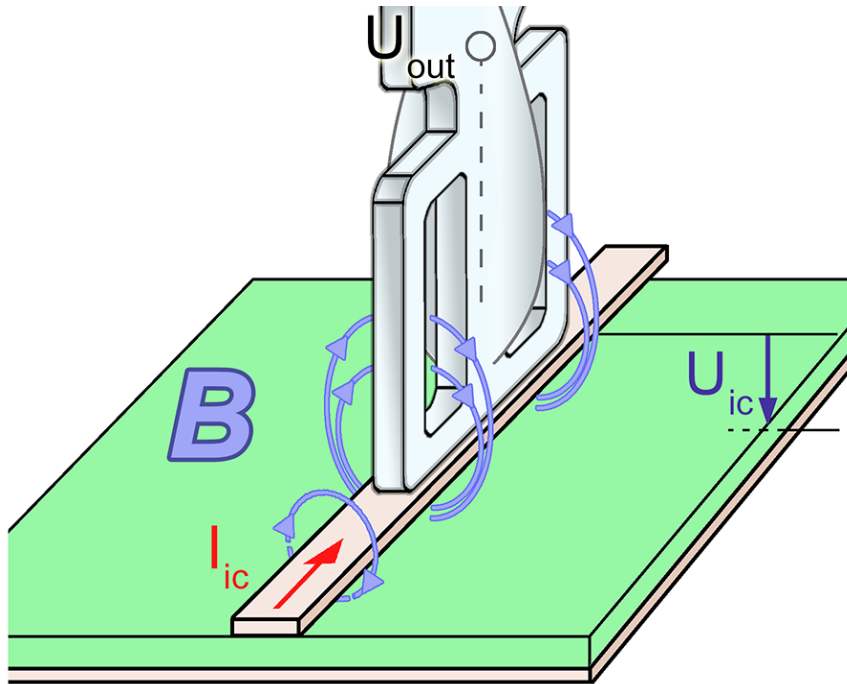
Correction curve



HR-R 8-1

Near-field probe up to 40 GHz B-field

Measuring principles



HR-R 8-1 B-Field probe head



HR-R 8-1

Near-field probe up to 40 GHz B-field

HR-R 8-1 B-Field probe with Probe Holder SH 02 over coplanar line CPL 40-01 38 in a test set up

