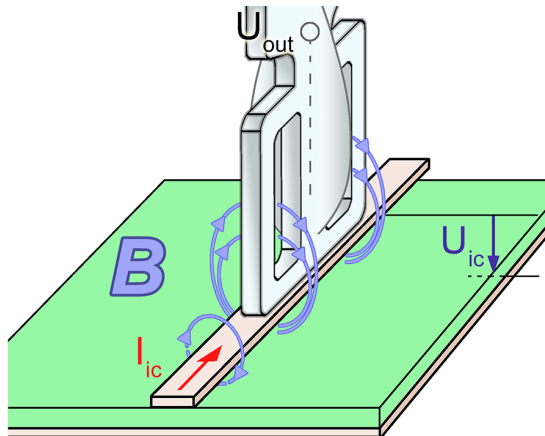


# HR-R 8-1

Near-field probe up to 40 GHz B-field



## Short description

The HR-R 8-1 is a passive near-field probe for measuring magnetic fields up to 40 GHz. The measuring tip is decoupled from the cable shield by special damping systems. In addition, the probe contains a current attenuator. The probe has an internal matching network to 50 ohm.

The special probe head of the HR near-field probe enables magnetic field measurements to be taken directly on IC pins or individual conductor tracks to localize B-field sources.

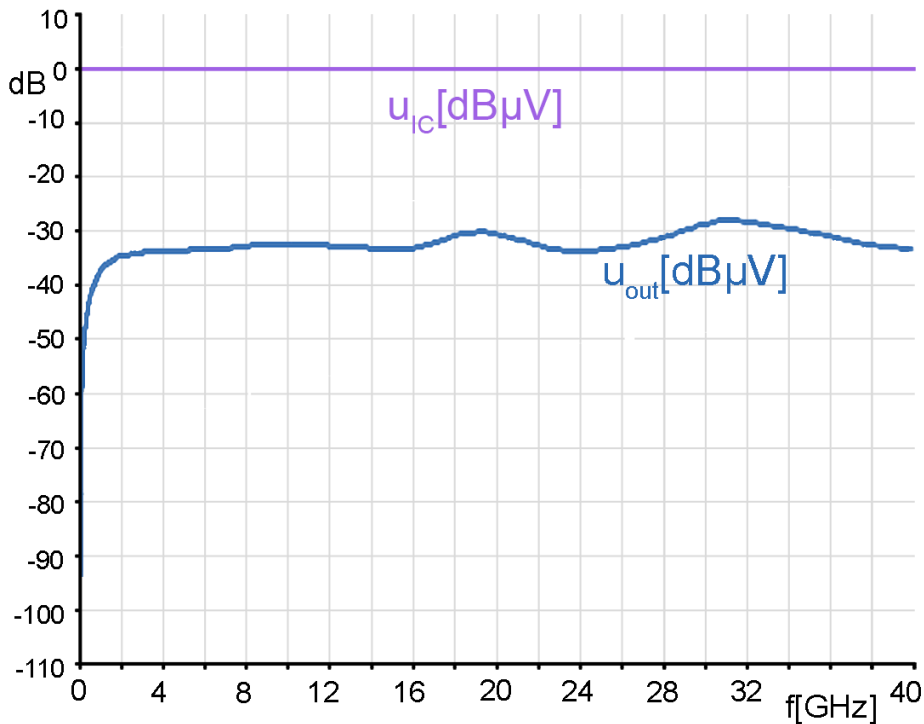
## Technical parameters

upper cut-off frequency	40 GHz
Output resistance	50 $\Omega$
Connector - output	2.92 mm (K), female, jack
Weight	19 g
Sizes (L x W x H)	(147 x 9 x 9) mm

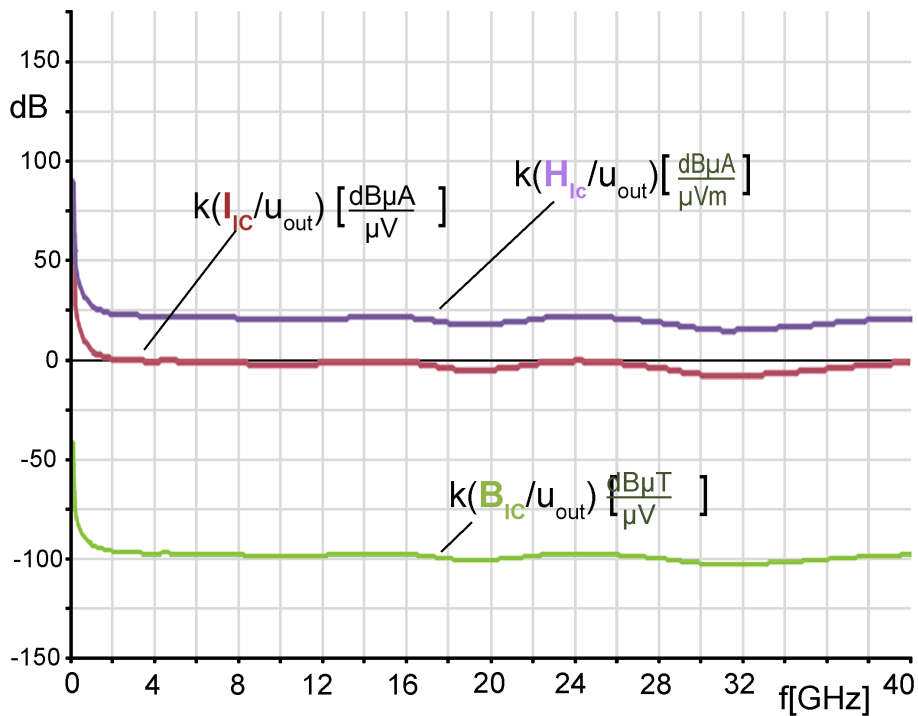
# HR-R 8-1

Near-field probe up to 40 GHz B-field

## Frequency response



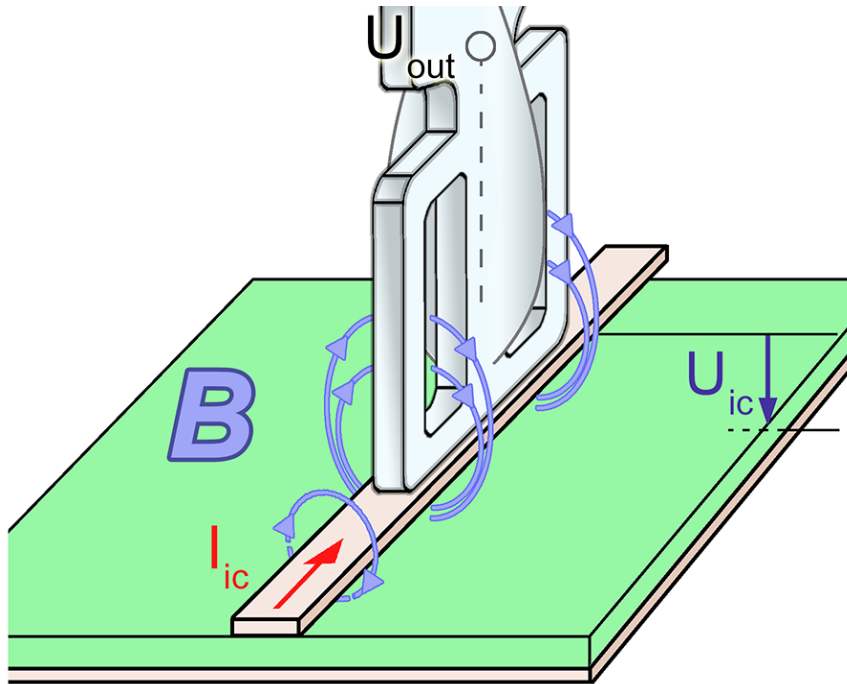
## Correction curve



# HR-R 8-1

Near-field probe up to 40 GHz B-field

## Measuring principles



## HR-R 8-1 B-Field probe head



# HR-R 8-1

Near-field probe up to 40 GHz B-field

HR-R 8-1 B-Field probe with Probe Holder SH 02 over coplanar line CPL 40-01 38 in a test set up

