

# P331-2

ESD 发生器



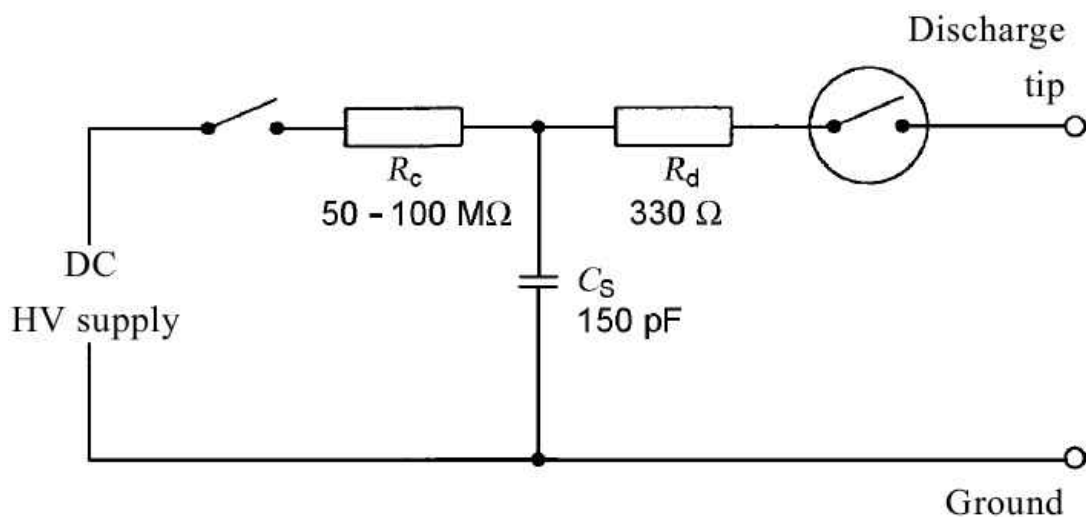
## Short description

P331-2型ESD发生器适合于按照IEC 61000-4-2 (System level) / HMM (Human Metal Model - component level, acc. to ANSI/ESD SP5.6-2009) 标准，直接在集成电路引脚或通过耦合器在USB、LVDS、以太网等高速端口处进行有线ESD耦合。

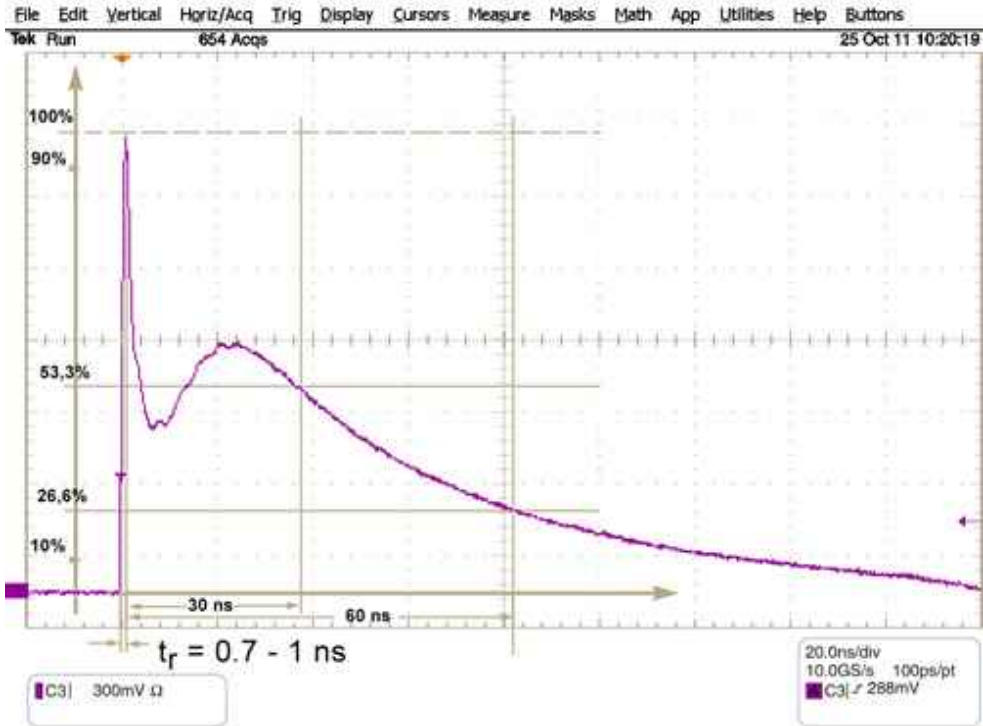
## Technical parameters

内阻	330 Ω
脉冲参数	
形状	0.7 / 60 ns
频率	0.1 Hz - 10 Hz
电压	± (0.1 - 6) kV
重量	250 g
尺寸 (L x W x H)	(79 x 41 x 40) mm

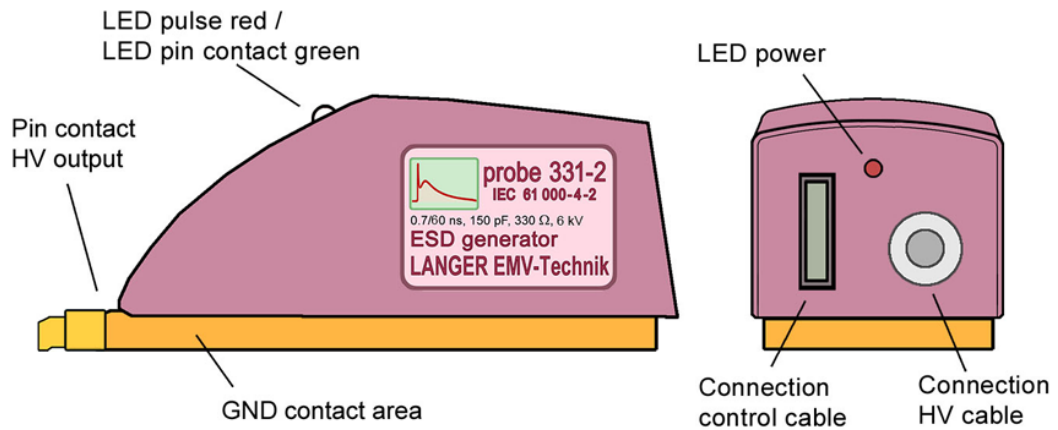
## 等效电路图



脉冲形状 (标准)



安装视图 01



Application with P331-2

