

# ICR HH100-27 set



## Delivery content

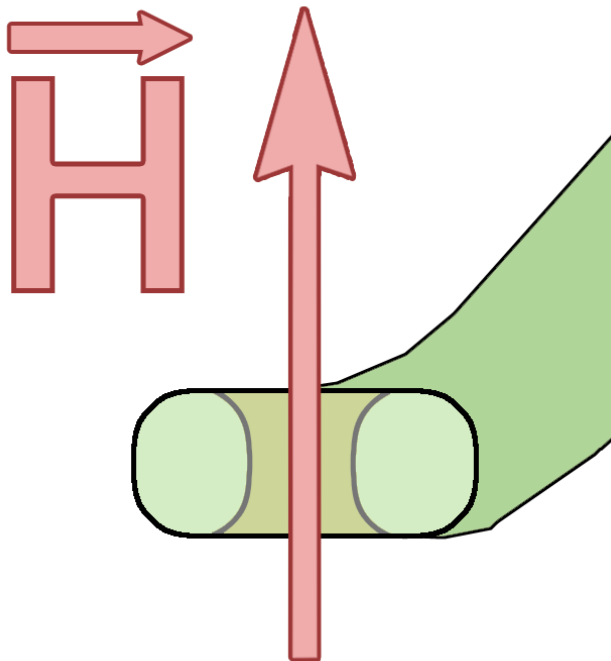
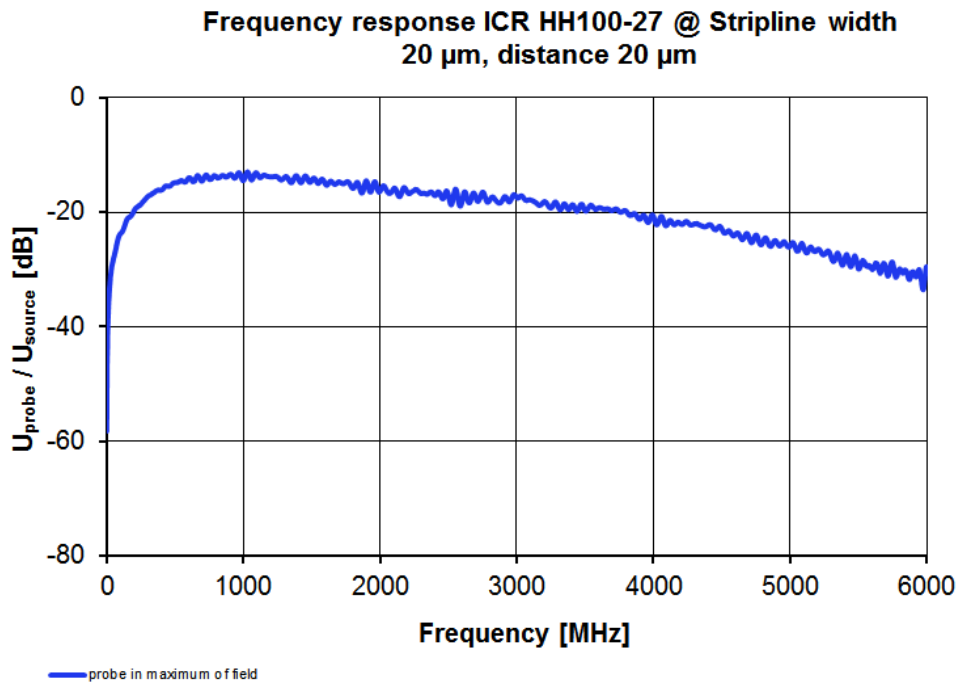
- 1x ICR HH100-27, 近场微探头 (1.5MHz-6GHz)
- 1x BT 706, T型偏置器
- 1x SMA-SMA RA
- 1x ICR-C
- 1x ICR Corr
- 1x NT FRI EU
- 1x ICR case1, System case

## Technical parameters

频率范围	1.5 MHz ... 6 GHz
分辨率	70 $\mu\text{m}$
内径	100 $\mu\text{m}$

# ICR HH100-27 set

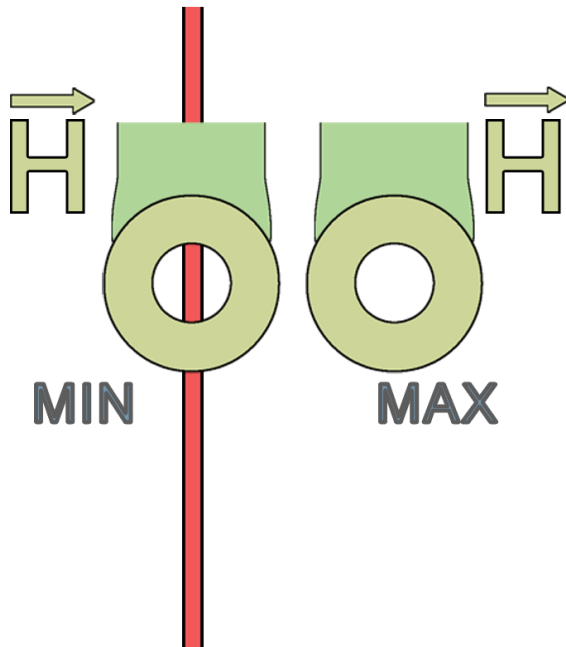
频率特性



# ICR HH100-27 set

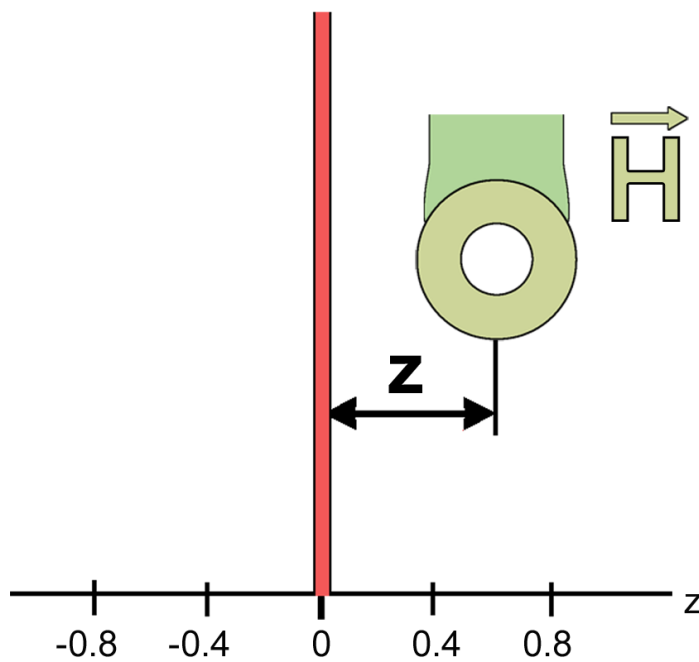
安装视图 01

## Stripline



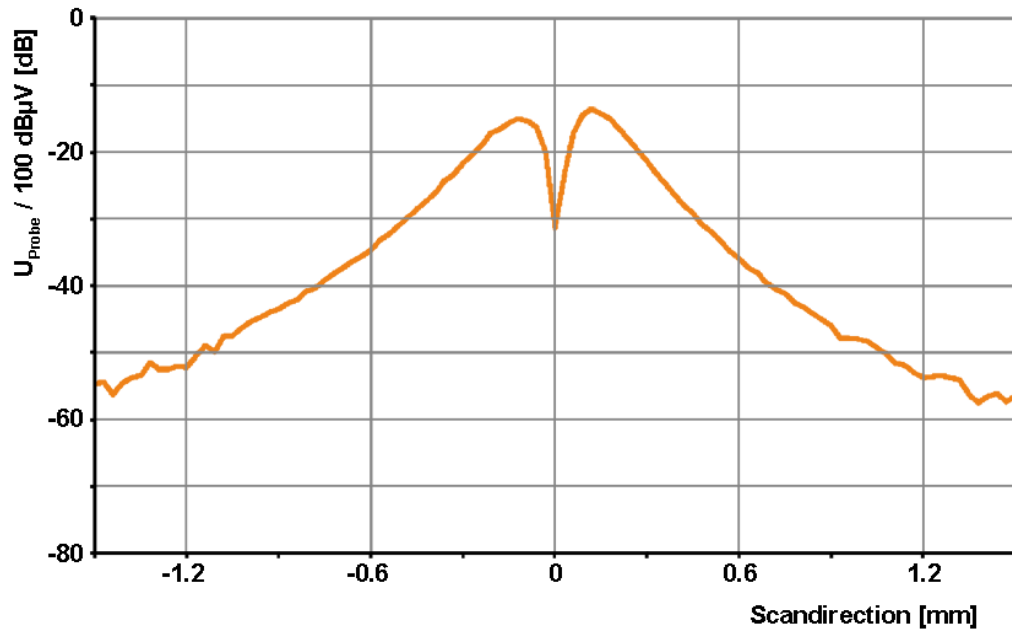
安装视图 02

## Stripline



# ICR HH100-27 set

横截面

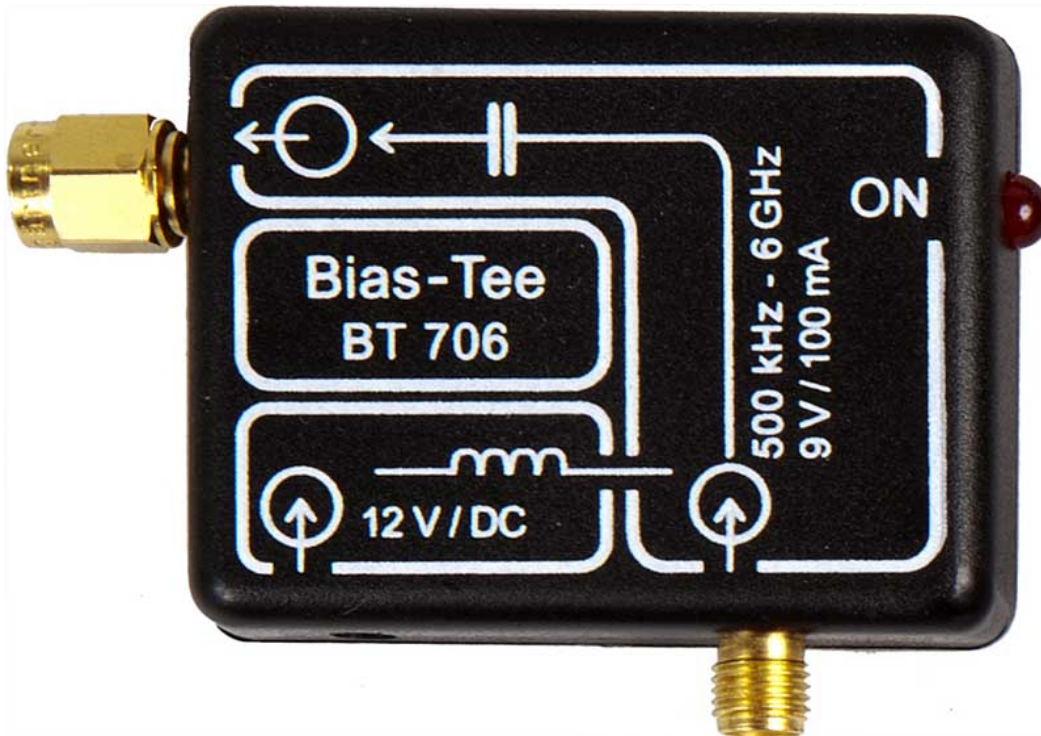


ICR HH100-27



# ICR HH100-27 set

BT 706 bias tee



Scope of delivery

