



DeviceManager

Supported Instruments

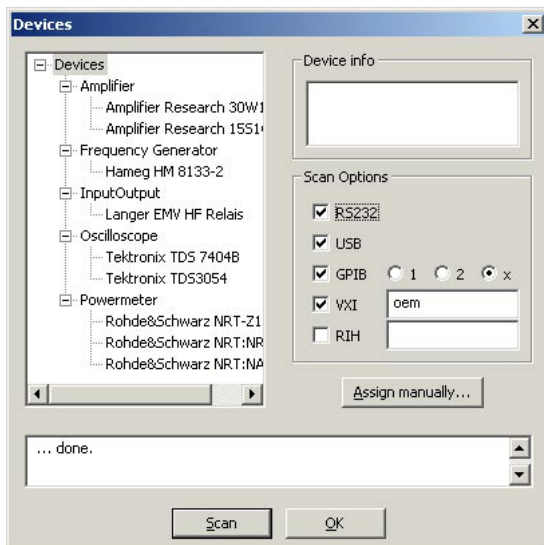


Table of Contents

1. Frequency Synthesizers	3
2. Powermeter.....	3
3. Oscilloscope	4
4. Spectrum Analyzer.....	4
5. Multimeter	6
6. Amplifier	6
7. Input/Output	6
8. Step Drives.....	6
9. Notes	7

1. Frequency Synthesizers

Device	Interface			Notes
	RS232	GPIB	Ethernet	
Advantest R3131A	✓	✓	-	2, 4
Advantest R3132	✓	✓	-	2, 4
Agilent E4440A	-	✓	-	4
Agilent E4443A	-	✓	-	4
Agilent E4445A	-	✓	-	4
Agilent E4446A	-	✓	-	4
Agilent E4447A	-	✓	-	4
Agilent E4448A	-	✓	-	4
Hameg HM5014	✓	-	-	2
Hameg HM5014-2	✓	-	-	2
Hameg HM5530	✓	-	-	2
Hameg HM8133-2	✓	-	-	3
Hameg HM8134-3				
R&S FSH6	✓	-	-	2, 4
R&S FSL6	-	✓	-	2, 4
R&S SMG	-	✓	-	
R&S FSEA	✓	✓	-	2, 4
R&S FSEB	✓	✓	-	2, 4
R&S FSEM	✓	✓	-	2, 4
R&S FSEK	✓	✓	-	2, 4

2. Powermeter

Device	Interface			Notes
	RS232	GPIB	Ethernet	
R&S NAP	✓	-	-	1
R&S NRT	✓	✓	-	1, 4
R&S NRT-Z	✓	-	-	1
R&S NRVD	-	✓	-	1, 5

3. Oscilloscope

Device	Interface			Notes
	RS232	GPIB	Ethernet	
LeCroy LC334AM	✓	-	-	
LeCroy LC684DM	✓	-	-	
LeCroy LC9362	✓	-	-	
Tektronix TDS 3012	✓	-	-	3
Tektronix TDS 3032	✓	-	-	3
Tektronix TDS 3052	✓	-	-	3
Tektronix TDS 3014	✓	-	-	3
Tektronix TDS 3034	✓	-	-	3
Tektronix TDS 3054	✓	-	-	3
Tektronix TDS 7154	-	✓	✓	
Tektronix TDS 7404B	-	✓	✓	

4. Spectrum Analyzer

Device	Interface			Notes
	RS232	GPIB	Ethernet	
Advantest R3131A	✓	✓	-	4
Advantest R3132	✓	✓	-	4
Advantest R3261A	✓	✓	-	4, 5
Advantest R3261B	✓	✓	-	4
Advantest R3361A	✓	✓	-	4
Advantest R3361B	✓	✓	-	4
Advantest U7341	-	✓	-	4
Advantest U7351	-	✓	-	4
Advantest U7371	-	✓	-	4
Advantest U7372	-	✓	-	4
Agilent 8590L	✓	✓	-	4, 5
Agilent 8592L	✓	✓	-	
Agilent 8594L	✓	✓	-	4, 5
Agilent 8591E	✓	✓	-	4, 5
Agilent 8593E	✓	✓	-	4, 5
Agilent 8594E	✓	✓	-	4, 5
Agilent 8595E	✓	✓	-	4, 5
Agilent 8596E	✓	✓	-	4, 5

Device	Interface			Notes
	RS232	GPIB	Ethernet	
Agilent E4401B	✓	✓	-	4, 5
Agilent E4402B	✓	✓	-	4, 5
Agilent E4403B	✓	✓	-	4, 5
Agilent E4404B	✓	✓	-	4, 5
Agilent E4405B	✓	✓	-	4, 5
Agilent E4407B	✓	✓	-	4, 5
Agilent E4408B	✓	✓	-	4, 5
Agilent E4411B	✓	✓	-	4, 5
Agilent E4440A	-	✓	-	4
Agilent E4443A	-	✓	-	4
Agilent E4445A	-	✓	-	4
Agilent E4446A	-	✓	-	4
Agilent E4447A	-	✓	-	4
Agilent E4448A	-	✓	-	4
Agilent E7401A	✓	✓	-	4, 5
Agilent E7402A	✓	✓	-	4, 5
Agilent E7403A	✓	✓	-	4, 5
Agilent E7404A	✓	✓	-	4, 5
Agilent E7405A	✓	✓	-	4, 5
Hameg HM5014	✓	-	-	4
Hameg HM5014-2	✓	-	-	4
Hameg HM5530	✓	-	-	4
Instek GSP827	✓	-	-	7
Instek GSP830	✓	-	-	7
R&S ETL3	-	✓	✓	4
R&S FSL3	-	✓	✓	4
R&S FSL6	-	✓	✓	4
R&S FSL18	-	✓	✓	4
R&S FSEA20	✓	✓	-	4
R&S FSEA30	✓	✓	-	4
R&S FSEB20	✓	✓	-	4
R&S FSEB30	✓	✓	-	4
R&S FSEM20	✓	✓	-	4
R&S FSEM30	✓	✓	-	4
R&S FSEK20	✓	✓	-	4
R&S FSEK30	✓	✓	-	4
R&S FSH6-26	✓	-	-	4

5. Multimeter

Device	Interface			Notes
	RS232	GPIB	Ethernet	
Keithley 2000	✓	✓	-	

6. Amplifier

Device	Interface			Notes
	RS232	GPIB	Ethernet	
AR 15S1G3	✓	✓	-	
AR 30W1000B	✓	✓	-	

7. Input/Output

Device	Interface			Notes
	RS232	GPIB	Ethernet	
Keithley 705	-	✓	-	4
Toellner 8815	-	✓	-	
Toellner 8842	✓	✓	-	4
Toellner 8852	✓	✓	-	4
NiDAQ devices	-	-	-	6

8. Step Drives

Device	Interface			Notes
	RS232	GPIB	Ethernet	
MiniMot	✓	-	-	4
Trinamic	✓	-	-	
Fisnar 7100	✓	-	-	4
Fisnar 7300	✓	-	-	4
Langer FLS102	✓	-	-	4
Langer FLS103	✓	-	-	4

9. Notes

- 1 Supported probes:
 - NAP-Z3
 - NAP-Z7
 - NRT-Z14
 - NRT-Z43
 - NRV-Z51
- 2 Only available with Tracking Generator Option.
- 3 Device has to be assigned to the interface manually.
- 4 Device which creates multiple virtual devices.
- 5 In RS232 driver test phase.
- 6 USB (USB-TMC) Interface usable.
- 7 This driver provides limited functionality due to numerous firmware bugs of the instrument. Its use is discouraged. (07-2008)