

ICR E150

近场微电场探头 (7MHz-3GHz)



Short description

这种探头以很高的分辨率和敏感性测量电场。距离被测物小于1mm时效果最佳。由于探头的尺寸非常小，它必须借助人工或自动定位系统（例如，Langer-扫描器）来移动。

The probe head is shielded against magnetic field coupling. A preamplifier is integrated in the probe housing, which is powered by the BT 706 bias tee. Adjustment screws on the housing allow manual alignment of the probe tip to the probe housing.

The probe supports the collision protection function of the Langer scanners, which stops the movement during vertical travel if the device under test is touched.

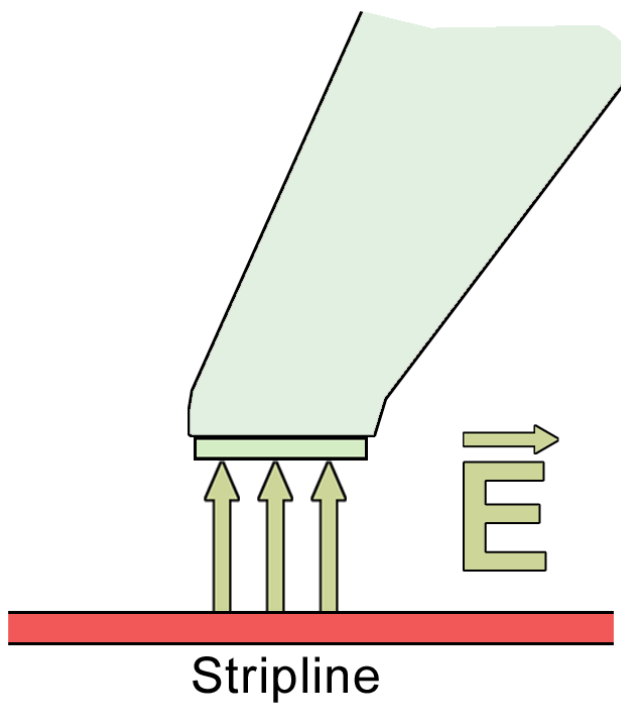
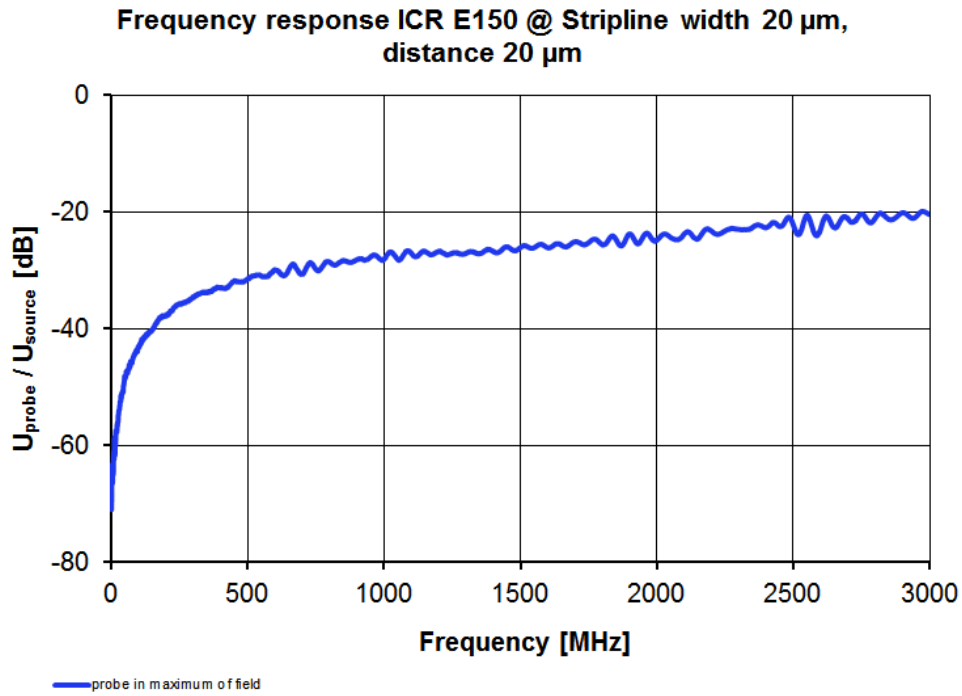
The housing can also be mounted on commercially available testers.

Attention! The tip is very sensitive to impact due to its construction, therefore we recommend positioning the probe through an automatic positioning system.

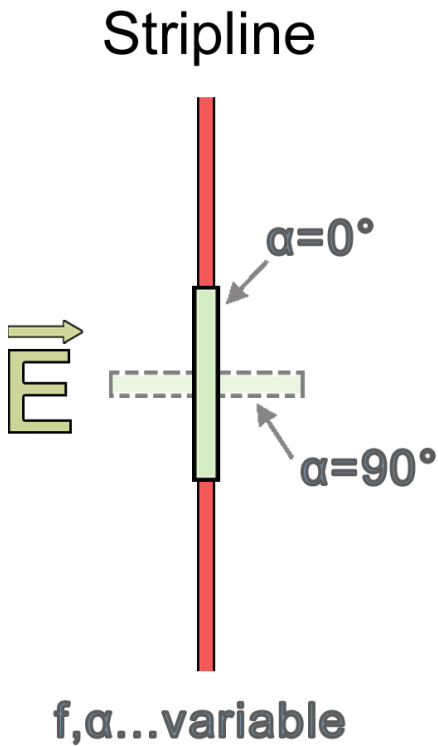
Technical parameters

| | |
|------|--------------------------|
| 频率范围 | 7 MHz ... 3 GHz |
| 分辨率 | 65 μm |
| 电极面积 | (150 x 35) μm |

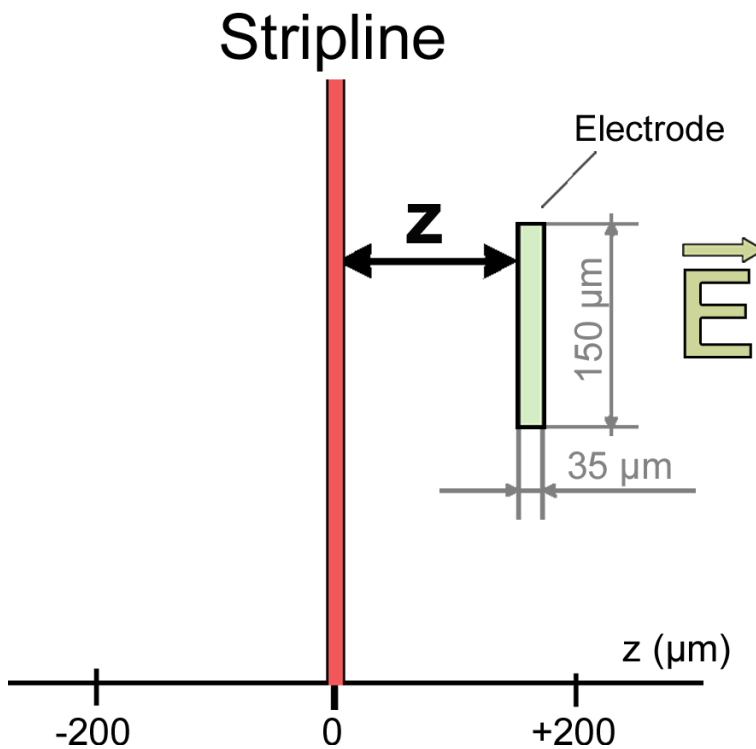
频率特性



安装视图 01



安装视图 02



横截面

